



<http://www.japanplatform.org>



特定非営利活動法人 (認定 NPO 法人)
ジャパン・プラットフォーム

〒100-0004 東京都千代田区大手町 1-6-1 大手町ビル 266 区
TEL : 03-5223-8891 FAX : 03-3240-6090
<http://www.japanplatform.org>

Bridging to the recovery

JAPAN PLATFORM 2007.08

The Japan Platform is a system to provide emergency relief in natural disasters and refugee situations more effectively and quickly.

JAPAN PLATFORM : Summary Report: Java Earthquake Program



JAPAN PLATFORM

Summary Report: Java Earthquake Program

ジャワ島地震被災者支援報告書



August 2007

JAPAN PLATFORM
ジャパン・プラットフォーム

JAPAN PLATFORM 2007.08



ジャパン・プラットフォーム
ジャワ島地震被災者支援報告書

Japan Platform
Summary Report: Java Earthquake Program



KnK/JPF

事業期間 : 2006年5月～2007年10月
資金規模 : 2.5億円余
総事業数 : 22事業(評価事業含む)
NGO数 : 10団体

Term : May 2006～Oct 2007
Fund : ¥250 mil
Number of Projects : 22(including evaluation)
Number of NGOs : 10

Acknowledgement

In the early morning of May 27, 2006, a massive earthquake with a magnitude of a little under 6 struck southern Yogyakarta in Java Island claiming at least 5,000 lives, injuring more than 45,000 people, and destroying more than 600,00 houses. Thanks to the support of all concerned, Japan Platform (JPF) was able to start assistance right after the disaster and has been supporting the victims.

The earthquake occurred only 8 months after the occurrence of the earthquake in northern part of Pakistan in October, 2005. The generous support and cooperation of the business sector enabled us to implement emergency and rehabilitation aid immediately after the initial government-sponsored response. JPF's multi-sector rehabilitation projects, especially on child education, was deeply appreciated by the affected people. On behalf of the beneficiaries and the NGOs engaged in the filed activities, I would like to extend my heartfelt gratitude to all the people who offered their courtesies in assisting us.

This report will serve to introduce our activities in details. The report was cordially created by those involved in the recent aid activities. We would appreciate receiving your frank comments and advice.

It is our sincere desire to devote to the improvement of our aid activities for the victims of natural and man-made disasters. Though our wish is to live in a world where no aid work is necessary, there still exist ceaseless natural disasters and violent conflict. Therefore, I cordially appreciate your continuing assistance and cooperation to our activities.

Yukie Osa
Chairperson, Board of Directors
Japan Platform

Summary

1. Scale of the Earthquake, and Needs of the Affected People

At 5:53 am, on the morning of May 27, 2006, an earthquake shook the Indonesian island of Java. With its epicenter about 37 km to the south of the city of Yogyakarta in central Java, the earthquake measured 5.9 on the Richter scale and caused the deaths of at least 5,744 people, and injured over 45,000 others. In addition to this, over 600,000 homes and many medical and educational facilities were destroyed or damaged, and aid such as medical care, distribution of relief goods, provision of shelter, education and psycho-social care all became a matter of extreme urgency. Among the areas affected by the disaster, damage was particularly severe in the Bantul District of Yogyakarta Special Region and the Klaten District of Central Java Province.

2. Japan Platform's Response

Japan Platform (JPF) started the Java Earthquake Program immediately after the earthquake and has been running it for approximately 1 year. The aid has been delivered by 9 operational NGOs who, in close cooperation with a total of 17 projects, companies and universities, have provided an effective response to the needs of the affected people by providing support for the transportation and distribution of supplies. The distinguishing features of JPF's aid on this occasion were the increased speed of its systems for providing medical aid during the initial response period, and implementation from an early stage of projects which deal with changes in local needs on a medium and long term basis. In terms of field of competence, NGOs carrying out educational aid and psycho-social care were particularly numerous. Moreover, the role of the local government and affected people, who traditionally help one another during disasters, served to increase the effectiveness of the aid.

Initial Response Phase

Following JPF's approval of the project proposal on May 29, 2006, Save the Children Japan (SCJ) carried out an initial investigation into educational aid in the disaster area on May 30. In addition, on May 31 and June 1, Humanitarian Medical Assistance (HuMA) and Nippon International Cooperation for Community Development (NICCO) commenced provision of emergency medical aid. During the initial response period, a total of 8 organizations were present and providing medical and educational aid, shelter, water and sanitation and psycho-social care. Furthermore, JPF carried out project coordination and projects to promote collaboration among organizations, as well as the interim monitoring of projects.

Emergency Assistance Phase

During the emergency response periods, 6 organizations were involved in improving sanitation and livelihoods, rebuilding elementary schools, as well as agriculture and psychosocial care. This aid work was aimed at restoration and reconstruction based on local needs as determined from the initial response period, and took a medium and long term viewpoint. Furthermore, in collaboration with companies, JPF implemented projects to transport relief goods from Japan to the disaster areas.

Recovery Assistance Phase

2 organizations carried out aid with long-term goals in the fields of psycho-social care and restoration of local fishing.

3. Project Evaluation

The purpose of the evaluation which was conducted from April 2007 to August 2007, was to understand and analyze the results and problems encountered in the provision of the Java Earthquake Program and to make proposals for improving JPF's aid projects in the future. The proposals are based on statements from people involved in the projects, local observations and an examination of documentary records, as well as feedback from workshops and a questionnaire aimed at operational NGOs regarding JPF's funding system.

Project Outcomes

- Development of a diverse range of aid activities from the Initial Response Phase through to Recovery Assistance Phase achieved through an increase in private funding
- Speedier implementation procedures for medical aid provision
- In addition to emergency aid, development of Recovery Assistance in the fields such as education, psycho-social care and industrial revival was achieved through software projects
- Implementation of creative aid projects rooted in local communities and culture such as psycho-social care through performance of traditional theater and revitalization of local industries and so on

Proposals

Proposals for Aid Project

1. Improvement of preparations prior to aid provision and improvements to systems of aid provision immediately after disasters through the formulation of contingency plans
2. Formulation of aid strategies that take emergency, medium and long term views of aid provision from the Initial Response to the Recovery Assistance
3. Improved coordination procedures and increased understanding of local systems and policies
4. Improved monitoring and evaluation through the procurement of qualitative and quantitative information both before and after implementation of projects
5. Increased publicity work
6. Formulation of guidelines for transportation of relief goods

Proposals for JPF Aid Scheme

1. Maintenance of systems for local coordination and faster provision of initial response aid by JPF
2. Maintenance of systems for domestic coordination
3. Greater care in the examination of project planning

1 Inter-Agency Standing Committee. (5 July 2006). Indonesia Earthquake 2006. Revision Response Plan. Version 2.1.
2 As above

ジャワ島地震被災者支援報告書
Summary Report: Java Earthquake Program

目次 / Contents

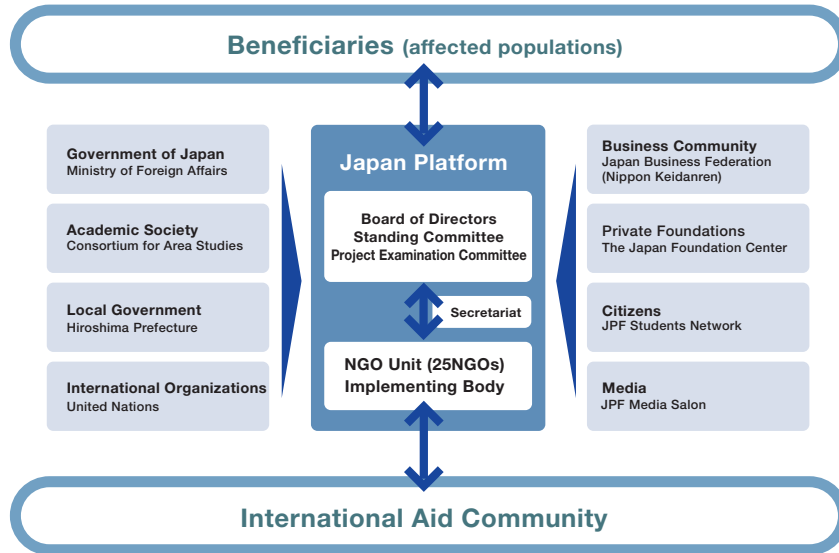
略語一覧

略語	正式名称	日本語訳
CARE	CARE International Japan	財団法人 ケア・インターナショナル ジャパン
CSR	Corporate Social Responsibility	企業の社会的責任
FKISP	Forum Komunikasi dan Informasi Simpul Petani	(現地農民組織)
HuMA	Humanitarian Medical Assistance	特定非営利活動法人 災害人道医療支援会
ICA	The Institute of Cultural Affairs	特定非営利活動法人 ICA 文化事業協会
IPAC	International Peace Assistance Center	特定非営利活動法人 国際平和協力センター
JAFS	The Japan Asian Association & Asian Friendship Society	社団法人 アジア協会アジア友の会
JPF	Japan Platform	特定非営利活動法人(認定NPO法人) ジャパン・プラットフォーム
KnK	Kokkyo Naki Kodomotachi	特定非営利活動法人 国境なき子どもたち
KRKIP	Koalisi Rakyat untuk Kedaulatan Pangan/People's Coalition for Food Sovereignty	(現地 NGO)
NGO	Non-Governmental Organization	非政府組織
NICCO	Nippon International Cooperation for Community Development	社団法人 日本国際民間協力会
NPO	Non-Profit Organization	非営利組織
SCC	Support. CC	特定非営利活動法人 サポート .CC
SCJ	Save the Children Japan	社団法人 セーブ・ザ・チルドレン・ジャパン

※緑背景の団体は実施 NGO。
Organisations in green are NGOs funded by JPF.

謝辞	i
要約	ii
Acknowledgement	iii
Summary	iv
略語一覧	v
目次 / Contents	vi
JPF の構造	1
JPF の活動規模	2
ジャワ島地震被災者支援の流れ	3
企業との連携	5
企業との連携 具体的な連携実例	7
実施 NGO 謝辞	8
ジャワ島地震被災者支援現地実態調査事業	9
ジャワ島地震被災者支援への協力企業・団体一覧	11
実施 NGO 及び実施事業紹介	13
ジャワ島地震被災者支援 事業一覧	19
Structure of JPF	21
JPF Programs	22
Java Earthquake Program	23
Collaboration with Business Sector	25
Collaboration with Business Sector: Cases of Collaboration	27
Acknowledgement by NGOs	28
Monitoring Mission of Java Earthquake Program	29
Supporting Corporations and Organisations on Java Earthquake Program	31
Introduction of NGOs and Projects	33
Projects of Java Earthquake Program	39

Structure of JPF



Japan Platform (JPF) is a mechanism created for Japanese NGOs in responding to major disasters and humanitarian crisis through facilitating cooperation and coordination among various actors from the various sectors, such as the government, business community, academic society, private foundations, local authorities, media, partner agencies and organisations, student network and so on.



A collapsed house in Java ©JPF



Villagers take meals at the back of the tent due to the heat wave. KKK/JPF



Villages in Ciarnis District in central Java suffered the damage of Tsunami which happened on July, 2006. Fishermen suffered huge loss as their fishing boats were heavily damaged. ©JPF

JPF Programs



■ On-going Programs

(USD=120JPY)

Humanitarian Assistance

Iraqi Refugee	Jul. 2007 -	4 projects	USD 58,334
East Timor	Jul. 2006 -	6 projects	USD 77,500
Sudan (South)	May. 2006 -	16 projects	USD 6,308,334
Iraq	Nov. 2002 -	22 projects	USD 20,233,334

Natural Disaster Assistance

Pakistan	Jul. 2007 -	3 projects	USD 66,667
Niigata	Jul. 2007 -	4 projects	USD 66,667

■ Completed Programs

Humanitarian Assistance

Sudan (Darfur)	Feb. 2005 - Feb. 2007	1 project	USD 2,608,334
Liberia	Feb. 2004 - May 2006	13 projects	USD 5,025,000
Afghanistan	Sep. 2001 - Aug. 2004	33 projects	USD 5,450,000

Natural Disaster Assistance

Solomon Islands	Apr. 2007 - Jun. 2007	1 project	USD 16,667
Lebanon	Sep. 2006 - May. 2007	6 projects	USD 1,183,334
Java	May. 2006 - Jun. 2007	22 projects	USD 2,083,334
Pakistan	Oct. 2005 - May 2007	46 projects	USD 6,966,667
Sumatra Island	Dec. 2004 - Feb. 2006	43 projects	USD 4,991,667
Iran	Dec. 2003 - Jan. 2006	22 projects	USD 2,466,667
Zambia	Aug. 2002 - Feb. 2003	5 projects	USD 1,200,000
Mongolia	Jan. 2001 - Feb. 2001	1 project	USD 16,667
India	Jan. 2001 - Mar. 2002	9 projects	USD 133,334

■ Total

18 programs
265 projects
USD 47,500,000

As of July 2007

Java Earthquake Program



Phase 1 (Initial)

May. 2006 ~
USD 963,838

- NGO [Assessment / Monitoring]
SCJ, IPAC
[Psycho-social Care]
SCJ, IPAC
[Distribution]
NICCO
[Medical]
HuMA, NICCO
[Water and Sanitation]
CARE
[Shelter]
JAFS
[Assessment]
JPF

Phase 2 (Emergency)

Aug. 2006 ~
USD 607,703

- NGO [Education]
NICCO, SCC
[Psycho-social Care]
KnK, NICCO, SCC
[Distribution]
JPF
[Livelihood]
JAFS
[Water and Sanitation]
CARE
[Agriculture]
ICA

Phase 3 (Recovery)

Nov. 2006 ~
USD 391,286

- NGO [Psycho-social Care]
KnK, NICCO
[Livelihood]
NICCO
[Assessment]
JPF



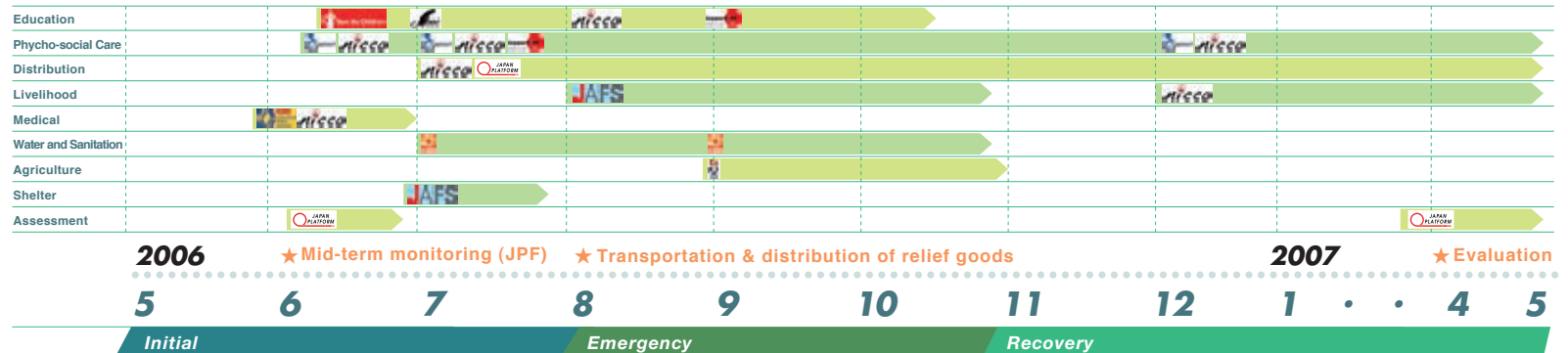
Banners of the tents played a great role of landmark to the Center activities in each village. ©JPF



NICCO managed the "Fishing-boat Bank" targeting at the fishermen who suffered the damage of Tsunami in cooperation with local fishermen association. Participants return a portion of the sales from the auction at fish market to the fishermen association. ©JPF



An interview at the Mid-term Monitoring. ©JPF



Collaboration with Business Sector

Through collaboration between Japan Platform and the business sector, we have implemented aid projects utilizing the five resources of the business sector: funds, relief goods, services, organisational networks, and staff.

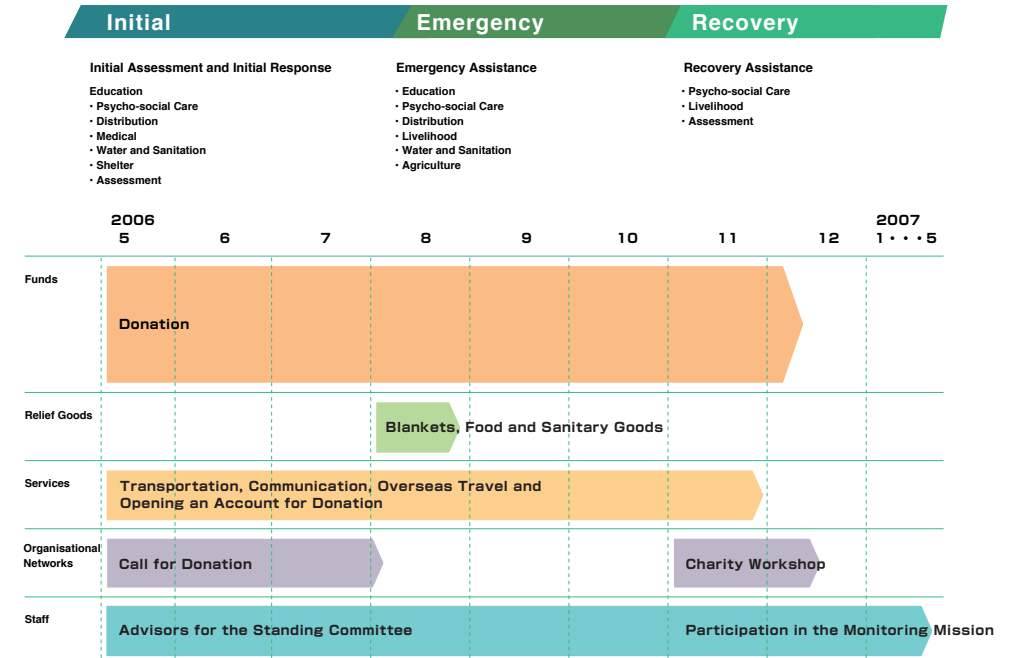


To Deliver Necessary Aid at Necessary Time and to Necessary Places by Utilizing the Business Sector's Diverse Resources

Since we established a collaborative relationship with Nippon Keidanren (Japan Business Federation) in order to implement aid projects for the Southeast Iran Earthquake (December 2003), we have been conducting diverse collaboration projects. On the occasions of the Earthquake off Sumatra, or the Asian Tsunami (December 2004), and the Pakistan Earthquake (October 2005), NYK Group supported transportation of relief goods, Bank of Tokyo-Mitsubishi UFJ, Ltd. opened charity accounts for donation transfer, and SOFTBANK MOBILE Corp. provided mobile-phones free of basic fee and call charge.

Thanks to their efforts for the cooperation, we were able to make the best of these achievements also for the Java Earthquake Program.

We are now building up a mechanism through which we can utilize the business sector's resources more effectively for aid implementation at disaster-stricken sites.



Collaboration with Business Sector

Cases of Collaboration

NEC Group

Fund-raising Campaign

NEC Group member-companies and NEC Group's Workers Union asked contributions to their members. The contributions from the staff, the executives, and the members of the workers union reached ¥8.89 million. The contribution was handed to Mr. Koji Takamatsu, the Secretary-General of JPF, by Mr. Satoshi Ida, NEC Senior Vice President and Mr. Shozo Yabuuchi, NEC Workers Union Vice President (Photo). The appeal for contribution by utilizing their network was also made for the Southeast Iran Earthquake (December 2003), the Earthquake off Sumatra, or the Asian Tsunami (December 2004), and the Pakistan Earthquake (October 2005). NEC Corporation has been making this contribution as their continuous and enthusiastic social contribution work.

Also, in November 2006, six months after the Java Earthquake, JPF had an opportunity to introduce our activities to the NEC staff at the "Bazaar de MDD," which was a NEC's social contribution event.



Photo : NEC Group

JAL Group

Transportation Support

JAL Group provided free international airline tickets for Yogyakarta, including exemption of excess baggage charge for medical equipment and other goods, by utilizing its aviation service. Thanks to this support, 32 NGO staff members were able to leave for the disaster-stricken areas. In addition to airline tickets, we have collaboration experience in transportation of relief goods: On the occasion of Pakistan Earthquake (October 2005), JAL Group transported relief goods, including 200 blankets donated by Volunteer J (fund-raising by the JAL Group staff), from Japan to Islamabad Airport in the capital of Pakistan.

Moreover, from the beginning of JPF's establishment in December 2000, JAL Group has been consistently offering its resources in collaboration with our activities providing airline tickets for the people participating in international conferences as well as transferring their human resources as a secretary-general of JPF.



Photo : Japan Airline

The Bank of Tokyo-Mitsubishi UFJ, Ltd.

Financial support

The Bank of Tokyo-Mitsubishi UFJ, Ltd. opened a charity account free of transfer charge. By utilizing the Bank's base network, we were able to meet the needs of wide range of people willing to donate. As a result, 657 cases, reaching ¥63 million, was raised: This accounts 38% of the contributions from the private sector. This collaboration case created a large impact on the society. In addition to this effort, The Bank and the bank employees donated ¥8.34 million. The Bank's engagement has been continuously developing in cooperation with JPF, especially on the occasions of the Earthquake off Sumatra, or the Asian Tsunami, (December 2004), and the Pakistan Earthquake (October 2005).



Photo : The Bank of Tokyo-Mitsubishi UFJ, Ltd.

Acknowledgement by NGOs



Kokkyo naki Kodomotachi (KnK)

We would like to express our sincere gratitude to all the people who extended their assistance to KnK's activities. As aid workers on the grass-root level, we were fully encouraged by the support from all concerned, including JPF for its financial support and the business sector for its communication support, provision of relief supplies, and international transportation support.

As a result of our project evaluation, we verified the positive effects of our activities. Also, we have confirmed that our activities will be continuously conducted with the participation of local people. Our gratitude goes to all concerned, especially JPF, for its leadership to help us with continuing such substantial activities despite our limited experience in the field of emergency aid.



"Terima Kasih Banyak" "Thank you very much!" to supporters in Japan KnK/JPF



Children enjoying the activities KnK/JPF



Nippon International Cooperation for Community Development (NICCO)

At 5:53 am (local time), on May 27, 2006, a great earthquake of 5.9 magnitude occurred in Java Island. Starting by conducting a mobile clinic, NICCO has developed diverse relief projects in Dlingo Sub-district in Bantul District: Distribution of tents to all kindergartens in the Sub-district, distribution of food and commodities to the affected people, reconstruction of an elementary school guided through a technical workshop for earthquake-proof construction, and psycho-social care for traumatized children at all elementary schools in the Sub-district. Our psycho-social care program was conducted through a theater work, for both actors and audience of dramas. It included a "drama tour" with an earthquake theme, performed by the drama groups established in each village. In addition, in December 2006, we implemented Fishing Boat Revolving Fund which provides the fishermen, suffered from the Tsunami in Ciamis District, with fishing boats.

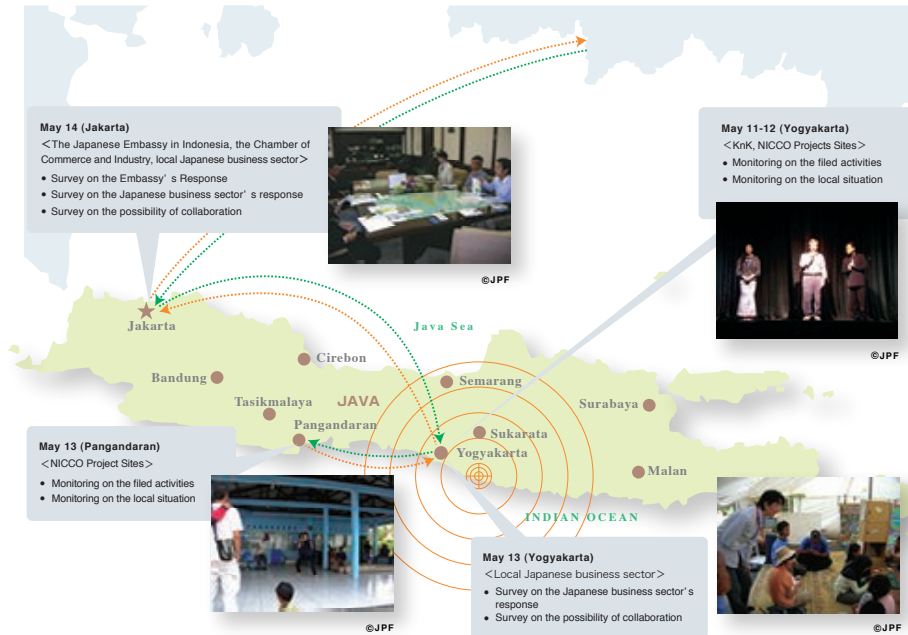


Excited child participated in the psycho-social care project ©NICCO/JPF

We thank the Japanese government, the business sector, and all concerned for their support. Their cordial understanding for emergency aid enabled us to implement the most suitable aid to meet the needs of the local people. We intend to develop the most effective aid activity while maintaining close collaboration with JPF.

Monitoring Mission of Java Earthquake Program

Itinerary: May 10, 2007 – May 15, 2007



May 14 (Jakarta)
 <The Japanese Embassy in Indonesia, the Chamber of Commerce and Industry, local Japanese business sector>
 • Survey on the Embassy's Response
 • Survey on the Japanese business sector's response
 • Survey on the possibility of collaboration



©JPF

May 11-12 (Yogyakarta)
 <KnK, NICO Projects Sites>
 • Monitoring on the filed activities
 • Monitoring on the local situation



©JPF

May 13 (Pangandaran)
 <NICO Project Sites>
 • Monitoring on the filed activities
 • Monitoring on the local situation



©JPF

May 13 (Yogyakarta)
 <Local Japanese business sector>
 • Survey on the Japanese business sector's response
 • Survey on the possibility of collaboration



©JPF

Participants:

- Mr. Toru Hibino** Advisor, JPF Standing Committee, Senior Manager, Social Contribution Office, Toshiba Corporation
- Mr. Koichi Kaneda** Advisor, JPF Standing Committee, Deputy General Manager, CSR Promotion Department, Daiwa Securities Group Inc.
- Ms. Waka Funahashi** Representative of JPF Student Network, Junior student at Waseda University
- Mr. Shingo Kikuchi** Project Staff, JPF Secretariat

Major Recommendations

Relationship with Local Japanese Community at the Phase of Initial Response

In order to speed up and streamline aid activities, it is critical to utilize information and network of the Japanese embassy, Japanese community, the Chamber of Commerce and Industry, and the business sector which have their bases close to the disaster-stricken areas.

Construction of Collaboration System with Business Sector

In order that local Japanese companies increase the possibility of choosing the NGOs working with JPF's in the affected areas as their partners to offer financial aid or relief supplies, it is important for the participating NGOs to maintain their implementation capacity and financial management competence. In addition, JPF is expected to communicate regularly its response situation to those companies.

Dispatch of the JPF Secretariat Staff

In order to build up a practical collaboration with the local Japanese community and business sector, it is significant to send the JPF Secretariat staff as immediate after a disaster as possible, and to establish close relationship with them while providing them with information.

Role of JPF Student Network

It is important to recognize and develop the unique role of the JPF Student Network: To communicate information to Japanese students through "blau," a free magazine, on social contribution activities conducted by the companies supporting JPF and to build up people-to-people relationship including connection with local student organizations.

Comments from the Participants

On this occasion, after monitoring the activities of 2 NGOs, I visited the local chamber of commerce and industry as well as several Japanese companies. While there I became aware of 2 things in particular. Firstly, everybody pointed out that the contributions that companies were making to the local government-related organizations were not actually reaching the intended beneficiaries at ground level. Secondly, the activities of the NGOs supported by JPF were not well known.

With both of these points in mind, it seems to me that there is still considerable scope to increase collaboration between companies and NGOs. To achieve this I felt that it was necessary for JPF to use the local chamber of commerce and industry in order to make companies aware of the activities of NGOs from their initial stages in a quick and timely manner.



©JPF

Toru Hibino
 Advisor, JPF Standing Committee
 General Manager, Social Contributions Office, Toshiba Corporation

End of the "Give and Forget" Era

Nowadays, corporate social responsibility (CSR) recognizes the impact on human rights and the environment of the processes behind the extraction, refining and manufacturing of raw materials and components. As a result, a great deal is made of the importance of the supply chains that underpin these processes. On this occasion, when I had the opportunity to observe restoration work following the Java earthquake, it struck me that there was also a need for supply chain management of the contributions that companies make to the relief effort. However, in this instance, it is not upstream management of the supply chain that is required, but downstream management. By this I mean surveillance of the application process, such as the way in which donations are used and the impact that they have.



©JPF

KnK (Kokkyo naki Kodomotachi, Children without borders), is an NGO supporting children who have been traumatized by the earthquake or tsunami. Staff members spend a lot of time with the traumatized children, in close physical contact, laughing with them and praising them. This feeling of being cared about serves to allay their fears. In order to help them become more outgoing, the children are encouraged to participate in a fun program where they express themselves through song, dance, art and crafts.

"Fishing Boat Revolving Fund" is supplied by the Nippon International Cooperation for Community Development (NICO). This initiative allows fisher folk who have lost their fishing boats to borrow replacement boats that JPF has donated to local associations. The fisher folk borrow the boats against the provision of a share of each catch. This allows them to save money towards the dream of once again owning their own boat. The fact that the boats that the fisher folk are borrowing will, in time, become theirs, also means that they are carefully looked after in the interim.

In this way, the better one understands the reality of the situation at the scene of the disaster, the more one comes to understand the importance of a contribution. As a "company", the simple fact of giving does, of course, constitute a noble act in itself. However, as part of a better understanding of one's corporate social responsibility, the nature of the positive (and on occasion, negative) impact on society of the funds donated is of greater interest to the "corporate citizen" and management of the "downstream" supply chain assumes greater importance.

CSR is not simply about the "upstream" impact caused by stakeholders, but also about the "downstream" impact on stakeholders, and can also be understood as a process of ongoing improvement in business activity. I am grateful to JPF for giving me the opportunity to once again realize that the "Give and forget" era is at an end.

Koichi Kaneda
 Advisor, JPF Standing Committee
 Deputy General Manager, CSR Promotion Department,
 Daiwa Securities Group Inc.

On this occasion it was the opportunity to observe local aid provision from the governmental, private and NGO viewpoints that proved to be the most educational. In particular, I felt the necessity for links with local companies and standards for evaluating the NGOs that are involved in providing aid. As a student I realize that it is not enough simply to have seen, heard and felt what I have, but that I need to take it to the level of action. This I can do through the free paper, "blau" as well as by talking directly to other students. Then, as an inducement to action, I hope to channel the aid that I witnessed, in a different form, into Japanese civil society.



©JPF

Waka Funahashi
 Representative of JPF Student Network
 Third year student of Waseda University

Supporting Corporations and Organisations on Java Earthquake Program

We highly appreciate your generous supports from numerous corporations and organisations.

Monetary Support

ADVANEX INC.
 AEON Mall Co., Ltd.
 Akebono Brake Industry Co.,Ltd.
 ASAHI BREWERIES,LTD.
 Asahi Mutual Life Insurance Company
 ASICS Corporation
 ASMO Co., Ltd.
 Bridgestone Corporation
 bunkakobo
 DAIDO LIFE INSURANCE COMPANY
 Daiki Sound Co., Ltd.
 Daiwa Securities Group Inc.
 DENSO Corporation
 DENSO Heartful Fund (associate volunteers fund)
 DENTSU INC.
 FUJIFILM Corporation
 FUJITSU LIMITED
 Fuji Xerox Co., Ltd. voluntary donation from employees
 Gakushikai
 HIROSE ELECTRIC CO., LTD.
 Hitachi Densen Shoji, Ltd.
 IBIDEN CO., LTD.
 ITOCHU Corporation and employees
 Japan Asia Investment Company Limited
 JAPAN ENERGY CORPORATION and employees
 Japan Tobacco Inc.
 Kao Corporation
 Kao Heart Pocket Club (Employees Club For Charitable Donation)
 KATOKICHI CO.,LTD.
 KOJIMA PRESS INDUSTRY CO.,LTD.
 KONICA MINOLTA HOLDINGS, INC.
 Kuribayashi Steamship Co., Ltd.
 LINCREA CORPORATION
 MAINICHI SOCIAL WELFARE FOUNDATION
 Meiji Yasuda Life Insurance Company
 MEITEC GROUP EMPLOYEES
 MIKIKOGYO CO., LTD.
 Mitsubishi Chemical Corporation
 Mitsubishi Corporation
 MITSUBISHI ESTATE CO., LTD.

MITSUBISHI ESTATE CO., LTD. Shakajijin Club
 Mitsubishi Heavy Industries,Ltd.
 Mitsubishi Logistics Corporation
 Mitsubishi Research Institute,Inc.
 MITSUI & CO., LTD.
 Mitsui O.S.K. Lines, Ltd.
 Mitsui Sumitomo Insurance Co.,Ltd.
 Smile Heart Club
 NEC Group and NEC Group's Workers Union
 NEC Networks & System Integration Engineering, Ltd.
 Nippon Carbon Co., Ltd.,
 Nippon COMSYS Corporation
 Nippon Life Insurance Company
 NIPPON METAL INDUSTRY CO.,LTD.
 Nippon Mining & Metals Co., Ltd. and employees
 NIPPON MINING HOLDINGS, INC. and employees
 NIPPON OIL CORPORATION
 NIPPON STEEL CORPORATION
 NIPPON TRAVEL AGENCY CO.,LTD.
 NIPPONKOA Insurance Company, Limited
 NIPPONKOA Insurance Company, Limited The Omoyari Club
 NISSAN MOTOR CO., LTD.
 NOK CORPORATION
 Normalization Club
 Osaka Securities Finance Company,Ltd.
 Pacific Resource Exchange Center (voluntary contributions)
 Panasonic
 Russell Investments Japan Co., Ltd.
 Sekisui House, Ltd.
 Sekisui House, Ltd.
 SHIBAURA MECHATRONICS CORPORATION
 SHIBUYA KOGYO CO.,LTD.
 Shin Paint
 Shiseido Company, Limited voluntary contribution
 SHIZUOKAGAS CO.,LTD.
 SMBC Friend Securities Co., Ltd.
 Software Consultant Corporation
 SOMPO JAPAN INSURANCE INC.
 Sony Corporation
 Sony Enterprise Co., Ltd.
 Sony group employees

Space Science Co., Ltd.
 SUMITOMO CHEMICAL Co.,Ltd.
 SUMITOMO FORESTRY CO.,LTD.
 SUMITOMO FORESTRY GROUP voluntary donation from employees
 SUMITOMO LIFE INSURANCE COMPANY
 SUMITOMO LIFE INSURANCE COMPANY Shiga Branch Office
 SUMITOMO Life Social Welfare Services Foundation
 SUMITOMO MITSUI BANKING CORPORATION
 TEIJIN LIMITED
 TEN · ARROWS CO., LTD.
 The Bank of Tokyo-Mitsubishi UFJ,Ltd.
 The Bank of Tokyo-Mitsubishi UFJ,Ltd. employees
 TOKYO ENERGY & SYSTEMS INC.
 Tokyo Kaikan Co., Ltd.
 Toshiba Corporation
 TOSHIBA TEC CORPORATION
 TOYO CORPORATION
 Toyota Auto Body Co.,Ltd.
 Toyota Tsusho Corporation
 VOLUNTEER J (JAL Group employee's Charity Fund)
 WACAOAL HOLDINGS CORP.
 WOWOW INC.
 Yamatake Corporation

Support with Relief Goods

KANEMATSU CORPORATION
 「Donation of Blankets」
 Kobe Association for the Study of Food and Health
 「Donation of Medical Equipments」
 Yamato Institute of Lifestyle-related Diseases
 Yukioka Hospital
 Yukioka School of Allied Health Profession
 Hyogo Rehabilitation Center Hospital
 Ogihara Orthopedic Hospital
 Mizuho Financial Group, Inc.
 「Donation of Space Foods and Instant Foods」
 Unicharm Corporation
 「Donation of Nappies and Sanitary Goods」

Support with Services

The Bank of Tokyo-Mitsubishi UFJ,Ltd.
 「Offering Bank Accounts for Donation」
 Japan Airlines
 「Free Airplane Tickets for NGO Staff」
 MITSUBISHI ESTATE CO., LTD.
 「Offering Rooms for Meetings」
 NYK Group
 「Shipping Support of Relief Goods」
 SOFTBANK MOBILE Corp.
 「Free Lease of Mobiles (Including Basic Fee and Call Charge)」

Support with their Organisational Network

Fuji Xerox Co., Ltd.
 「Internal Charity Workshop」
 ITOCHU Corporation
 「Provision of an Opportunity for Charity Workshop at An Event」
 NEC Group
 「Provision of an Opportunity for Charity Workshop at An Event」
 Nippon Keidanren (Japan Business Federation)
 「Fund-raising (Call for Donation)」
 Sony Corporation
 「Internal Charity Workshop」

Support with Human Resources

Daiwa Securities Group Inc.
 「Participation in the Monitoring Mission / Participation to Charity Workshop」
 JPF Student Network
 「Participation in the Monitoring Mission / Support of Secretariat」
 Toshiba Corporation
 「Participation in the Monitoring Mission / Participation to Charity Workshop」

Introduction of NGOs and Projects



Kokkyo naki Kodomotachi (KnK)
<http://www.knk.or.jp/>

Organisation

Children without Borders (KnK) is a non-governmental organization based in Tokyo which aims at supporting underprivileged children and youths in developing countries. Since a project was commenced in Cambodia in 2000, KnK has been expanding its activities in 7 countries in Asia.

Targeting street children, young victims of trafficking, and disadvantaged adolescents such as the ones affected by natural disasters, KnK believes that by providing home, educational opportunities, vocational training, and psychosocial care, those children and youths will restore their basic rights and human dignity to be fully prepared for social reintegration. KnK also implements educational activities for the youths in Japan so that children in the world will deepen mutual understanding and foster friendship in line with our philosophy of "Growing Together."



For the bright future of children
 KnK/JPF

Project Outline

Educational support and psychosocial care for youths affected by Java Earthquake

This project was implemented in Bantul district, which was one of the worst hit districts among the devastated area, and approximately 400 youths benefited. At the Children Centers in 4 villages, the local team consisting of experienced social workers and educators, provided games, reading, drawing, writing, and handicrafts for their self expression. In addition, sports, safety training, moral education and supplementary lessons to catch up with the studies left behind, were conducted.

Those activities contributed to better the psychosocial recovery and complement the educational opportunities of the affected youths. Meanwhile, a part of the Center was utilized as facility for primary and secondary schools, and the Center provided necessary stationeries and textbooks as well.

Social Workers, at the same time, listened to what the youths say or gave counseling by minutely understanding each youth's state of mind so that they will retrieve mental stability. In the last phase, KnK conducted psychosocial assessment in full cooperation with specialists in the field of social psychology in a local university. Furthermore, in order to observe the changes occurring in the youths in terms of surrounding living and educational situations, a survey was conducted to make a final assessment on the result of the project.

The main outcome was apparently seen in the positive changes of youths' behaviors and mental conditions. In addition, the active community participation in the Center operation was reported as one of the positive impacts of the project.



Children's smile has been back to the villages
 KnK/JPF



Growing together with children in Asia
 KnK/JPF



Children participating in center's activities in the tent
 KnK/JPF



Nippon International Cooperation for Community Development (NICCO)
<http://www.kyoto-nicco.org/>

Organisation

Nippon International Cooperation for Community Development (NICCO) is a non-governmental organization, which undertakes projects in the field of emergency relief, community development based on Permaculture and vocational training regardless of any racial, religious or political boundaries.

Since 1979, NICCO has been implementing grassroots level projects which benefit residents directly to be self-reliant both economically and mentally in developing countries. NICCO attained an aggregate corporation status in 1993 and legal status of tax refund in 1996 certified by the Ministry of Foreign Affairs of Japan, and a Special Consultative Status in 1996 certified by the Economic and Social Council of the United Nations.

Project Outline

Emergency and Rehabilitation Projects for the earthquakes in Java (From 31st May 2006 to 1st Jun 2007)

Target area: Dlingo District, Bantul Sub-district, Yogyakarta, Legokjawa, Cimerak Sub-district, Ciamis District, West Java (Fishing Boat Revolving Fund Project only).

Project: Mobile Clinic, Child Protection, Distribution of Non-food Items, Psycho-social Care, Reconstruction of School with Workshop of Earthquake-proof Technique and Fishing Boat Revolving Fund.



Ms. Minami receiving a certificate of commendation from the County Mayor of Bantul
 ©NICCO/JPF



Psycho-social care activity
 ©NICCO/JPF



A mobile clinic
 ©NICCO/JPF



A fishing boat contributed through Fishing Boat Revolving Fund Project
 ©NICCO/JPF



Children of Java Island
 ©NICCO/JPF

Introduction of NGOs and Projects



CARE International Japan (CARE)
<http://www.careintjp.org/>

Organisation

CARE (Cooperative for Assistance and Relief Everywhere) was established in 1945 with the aim of providing relief to post-war Europe. CARE's support was extended to Japan in 1948 and over the next 8 years, 10 million Japanese received aid. Thirty four years later in 1987, Japan found itself in a position to help those suffering from poverty around the world.

Today, having offices in more than 70 developing and war-torn countries, CARE is one of the most prominent international NGOs in the world. In times of war or crisis, CARE uses its global network to deliver immediate relief to affected communities. The relief is continued to



A delivery truck with a banner ? "From citizens in Japan to people in Yogyakarta" "Rise again Yogyakarta" ©CARE/JPF

rehabilitation, reconstruction, and long-term support for development. For its high level of expertise and proven track record, CARE is highly recognized and trusted, not only by the communities it serves, but by a wide range of organizations, such as the UN and donor countries.

Project Outline

In response to the Central Java earthquake, CARE International Japan implemented projects in two phases- "Water and Sanitation" and "Health Improvement" - with funds from the JPF.

In difficult post-disaster situations, protecting people's health becomes a priority. Through these projects, CARE distributed safe water solutions along with other Non-food Items. In addition, training was provided to community health volunteers, with the aim of enabling the community to protect their own health. Health promotion campaigns were also carried out using radio and street-drama.



Demonstration before distributing water solutions in a community ©CARE/JPF

These relief projects assisted 200,000 people in the most affected area around Klaten, with messages of encouragement from Japanese citizens. The knowledge and experience that the community acquired is expected to continue contributing to the prevention of outbreak of infectious diseases.



The Institute of Cultural Affairs (ICA)
<http://www.icajapan.org/>

Organisation

The Institute of Cultural Affairs (ICA) is a private, non-profit organization working for human factor in international cooperation. ICA's activity is based on the belief that long-term, sustainable development happens only when people grasp the significance of their own lives in the larger scheme of things -- when they actively participate in the changes taking place around them instead of merely being targets of that change.



Collapsed houses in Klaten ©ICA/JPF



Recovery Plan Workshop ©ICA/JPF

Project Outline

Community Recovery Project in Klaten and Bantul District

This project was implemented by ICA Japan and its local counterparts Koalisi Rakyat untuk Keadaulatan Pangan / People's Coalition for Food, Sovereignty (KRKP) and Forum, Komunikasian Informasi Simpul Petani (FKISP) in the earthquake-stricken areas of Klaten and Bantul, Central Java, Indonesia. The aims of the project were to reduce the harvest fluctuation and to increase income levels in these rice-producing areas. After the earthquake, the government of Central Java province estimated that the detriment of farmers was extremely high, anticipating income loss and threats to sustaining their livelihoods. This in turn meant a probable dependency on food distribution. In response, ICA Japan and FKISP distributed 560 sickles, 210 hoes, 1,400 bags of rice, 1,400 kg of rice seeds, 14 rice-milling machines, 280 plastic sheets for drying rice, 9 platform scales, about 280 small truckloads of compost, and delivered 2 community recovery plan workshops and organic agricultural trainings in 14 villages.



Japan Asian Association and Asian Friendship Society (JAFS)
<http://www.jafs.or.jp/>

Organisation

JAFS is a NGO involved with international cooperation through networking. Since 1979, it has been JAFS's main activity to provide safe drinking water to the rural areas in Asian countries where its scarcity has become a serious problem to sustain the lives of the people there. Through this activity, we aim that the people in the areas become self-reliant.



A girl drinking precious water from her hand ©JAFS/JPF

Project Outline

In our relief activities in Java Earthquake in 2006, we constructed the quakeproof shelters that were able to sustain in the periods of shocks. They were all built by hand and with local materials, and more over, with solid techniques. In addition to the competence of our technical advisors, I believe, our enthusiastic appeal to the villagers to participate in this project, even during such hard time, was a positive factor of the success of this project.



International Peace Assistance Center (IPAC)
<http://www.ipac-jp.org/>

Organisation

International Peace Assistance Center (IPAC) was founded in 2005 to strengthen the contribution of the Japanese private sector for the mitigation of outbreak and escalation of regional, ethnic, and other kinds of conflicts, which have erupted throughout the world.

IPAC is a non-governmental organization engaged in peace building and conflict mitigation to help create a secure global environment in the post-Cold War era. With this objective, IPAC has developed a number of programs both at home and abroad, including the deployment of staff to carry out the peace assistance programs in Sri Lanka, Indonesia, and East Timor.

In cooperation with the Local Authorities and International NGOs in the field of peace building, IPAC is managing a series of educational workshops for young people. These workshops aim to cultivate an understanding of the essence of conflict and to develop dialogue skills. Moreover, IPAC carries out emergency relief, rehabilitation, and reconstruction programs in the disaster areas.

Through the peace assistance programs, IPAC contributes to the peace of the World.

Project Outline

With the funds from Japan Platform (JPF), IPAC assisted two primary schools (830 students) in Bantul and Klaten in 2006. This comprehensive educational assistance included six activities: 1. building temporary schools, 2. making educational committee, 3. establishing inter-school network, 4. supporting formal school education, 5. providing informal education for trauma-care, and 6. restoring library.

Educational Assistance in Bantul & Klaten



Happy children with the new textbooks ©IPAC/JPF



Sports recreation for the earthquake affected children ©IPAC/JPF



Children in front of their broken school in Bantul ©IPAC/JPF

Introduction of NGOs and Projects



Humanitarian Medical Assistance (HuMA)
<http://www.huma.or.jp/>

Organisation

Humanitarian Medical Assistance (HuMA) was founded in June 2002 as a Non-profit Organization(NPO) in Japan. Our objective is to implement humanitarian medical relief on the occasion of disasters in the world.



Pakistan (2005) : Field Clinic in Batgram
 ©HuMA/JPF



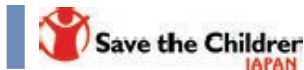
Java (2006): offering the expertise of Orthopedic operation
 ©HuMA/JPF



Disaster Nursing Seminar
 ©HuMA/JPF

Project Outline

HuMA sent a medical relief team to provide medical service for the victims of the earthquake in central Java. The team conducted clinical services in a hospital or at mobile clinics in isolated areas, or offered the expertise of orthopedic treatment in collaboration with International NGOs, a local NGO, and also with medical teams from the hospitals in Japan.



Save the Children JAPAN (SCJ)
<http://www.savechildren.or.jp/>

Organisation

Who we are:

Save the Children is the world's largest independent organization working throughout the world for the betterment of the lives of children and their families.

Our work is to realize a bright future for children, and protect the rights of children, as enshrined in the UN Convention on the Rights of the Child.



School tent with children
 ©SCJ/JPF

Project Outline

Emergency Response for the Java Earthquake – Educational Project

Beneficiaries: 27,840 school children and kindergartners in the affected areas, Bantul and Klaten in Yogyakarta.

Purpose of the project:

- 1) to protect children from hazardous environment
- 2) to regain children's mental well-being
- 3) to educate community people the way to correspond to the recurrence of the earthquake

Content of the project:

- 1) to remove rubbles to make space for tents
- 2) to distribute and set up 3 tents in each school
- 3) to provide desks and chairs for students to study



Support. CC (SCC)
<http://www.support.cc/jawa/>

Organisation

ESTABLISHMENT

In 2006, the members with extensive experience administering support activities for domestic disasters (CHU-ETSU Earthquake and some floods) established an NPO in HIDA-TAKAYAMA which supports activities for not only domestic disasters but also overseas disasters.



Newspaper in Java



Music Therapy

©SCC/JPF

Project Outline

SUPPORT ACTIVITY FOR EARTHQUAKE IN THE MIDDLE OF JAVA [TEXTBOOK DISTRIBUTION]

At primary school in Gantiwarno County, many children lost their houses and families. And in the area where the almost all houses were completely destroyed, many children lost their textbooks. In this area, however, there was no free textbook distribution system. So, the representative of another education center asked us strongly to send textbooks as an education support. In order to solve this problem, we sent textbooks to the primary school children who could not afford their textbooks. This support activity was reported by local newspapers.



Gesikan Junior School

©SCC/JPF

MUSIC THERAPY

We held a music session as mental care program for children who had lost their family and friends. This session was based on the program provided by therapists, and we played the instruments made of bamboo which we could get easily there.

Projects of Java Earthquake Program

	Organisation	Name of Project	Term	Fund	Amount		
Initial Response Assessment	SCJ	Central Java Earthquake: Initial Assessment	Start : 2006.5.30 End : 2006.6.10	Government	Y1,548,100		
	Initial Response	CARE	Java Earthquake: Emergency Water and Sanitation Project	Start : 2006.7.7 End : 2006.8.27	Government	Y23,820,620	
		HUMA	Central Java Earthquake: Medical Assistance Project	Start : 2006.5.31 End : 2006.6.25	Government	Y9,629,924	
		IPAC	Java Earthquake: Education Project for the Affected Children	Start : 2006.7.5 End : 2006.8.16	Government	Y6,427,488	
		JAFS	Sanitation, Restoring living conditions and Reconstruction of Public Facilities Project in 2 Villages of Klaten District	Start : 2006.6.24 End : 2006.7.23	Government	Y6,373,205	
		JPF	Java Earthquake Program: Co-ordination Assistance Project	Start : 2006.6.26 End : 2006.7.11	Government	Y1,436,200	
		KnK	Protection and Psychological Care, and Education Project for Youth at Wonokromo village in Bantul District	Start : 2006.6.13 End : 2006.7.27	Government	Y2,661,730	
		NICCO	Java Earthquake: Emergency Medical Assistance Project	Start : 2006.5.31 End : 2006.6.30	Government	Y10,393,170	
		NICCO	Child Protection and Distribution Project in Bantul District	Start : 2006.7.3 End : 2006.7.25	Government	Y19,615,575	
		SCJ	Java Earthquake: Setting up of Temporary School Facilities Project	Start : 2006.6.13 End : 2006.8.16	Government	Y33,754,500	
		Total : 10 Projects					Y115,660,512
						Government	Y115,660,512
						Private	Y0
		Emergency Assistance	CARE	Java Earthquake Reconstruction Assistance: Sanitation Improvement Project	Start : 2006.8.28 End : 2006.10.27	Private	Y16,084,704
ICA	Central Java Earthquake: Counter-disaster Assistance Project		Start : 2006.8.26 End : 2006.10.31	Private	Y9,874,700		
JAFS	Reconstruction of Public Facility and Technical Assistance for the pottery making in Klaten District		Start : 2006.8.10 End : 2006.10.23	Private	Y11,116,200		
KnK	Protection and Psychological Care, and Education Project for Youth in Bantul District		Start : 2006.7.28 End : 2006.11.24	Private	Y9,496,460		
NICCO	Community-driven Reconstruction of A Primary School through Earthquake Protection Workshop, and Psycho-Social Care Project		Start : 2006.7.28 End : 2006.11.30	Private	Y21,525,565		
SCC	Primary School Text Distribution and Psychological Care Project		Start : 2006.8.28 End : 2006.10.12	Private	Y4,826,675		
Total : 6 Projects					Y72,924,304		
				Government	Y0		
				Private	Y72,924,304		
Recovery Assistance	KnK	Protection and Psychological Care, and Education Project for Youth in Bantul District ★	Start : 2006.11.29 End :	Private	Y12,310,280		
	NICCO	Recovery Assistance Project through Psycho-social Care and Fishing Boat Revolving System ★	Start : 2006.12.1 End :	Private	Y34,644,030		
	Total : 2 Projects				Y46,954,310		
				Government	Y0		
				Private	Y46,954,310		
Monitoring	JPF	Java Earthquake Program: Report Making Project ★	Start : 2007.4.1 End :	Private	Y12,454,960		
	JPF	Java Earthquake Program: Monitoring Mission ★	Start : 2007.4.25 End :	Private	Y2,112,160		
	Total : 2 Projects				Y14,567,120		
				Government	Y0		
				Private	Y14,567,120		
Transportation	JPF	Transportation and Distribution Project (Medical Equipments)	Start : End :	Private	Y198,700		
	JPF	Transportation and Distribution Project (Blankets, Dried Food and Sanitary Goods)	Start : 2006.8.1 End : 2006.10.18	Private	Y436,168		
	Total: 2 Projects				Y634,868		
				Government	Y0		
				Private	Y634,868		
Total : 22 Projects					Y260,741,114		
				Government	Y115,660,512		
				Private	Y135,080,602		

Amount above is only the budget at the contract not the final expenditure, since not all the final project reports have been approved yet.

Final reports with ★ are to be submitted.

Final project budget reports will be posted on the JPF website, after the approval of final project reports.

The official name of the projects is available only in Japanese. This translation is only to assist understanding.